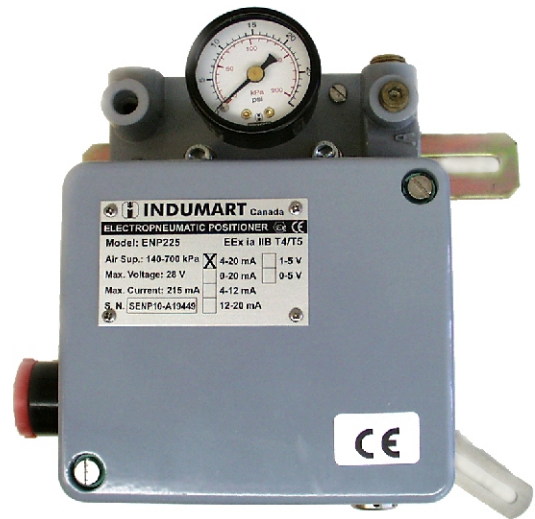


MODEL: ENP225

- ACCURATE AND STABLE
- INPUT: 4-20 mA OR 0-5 VDC
- ZERO AND SPAN ADJUSTMENTS
- SINGLE OR DOUBLE ACTING MODELS
- INTRINSICALLY SAFE OR EXPLOSION PROOF



INTRODUCTION

Indumart *ENP225* Electropneumatic Positioners compare the electric signal (mA or VDC) with the actuator's position, generating a pneumatic output signal from 0 to 100 psi (0 to 7 bar).

The standard internal cam has a profile which grants a linear relation between the input signal and the actuator stroke. The profile can be changed to optimize the performance of the positioner. The zero and span adjustments are accessible from outside of the instrument.

The instrument is available as single or double acting version. Depending on the process, linear, fast, slow or virgin cam profile should be specified.

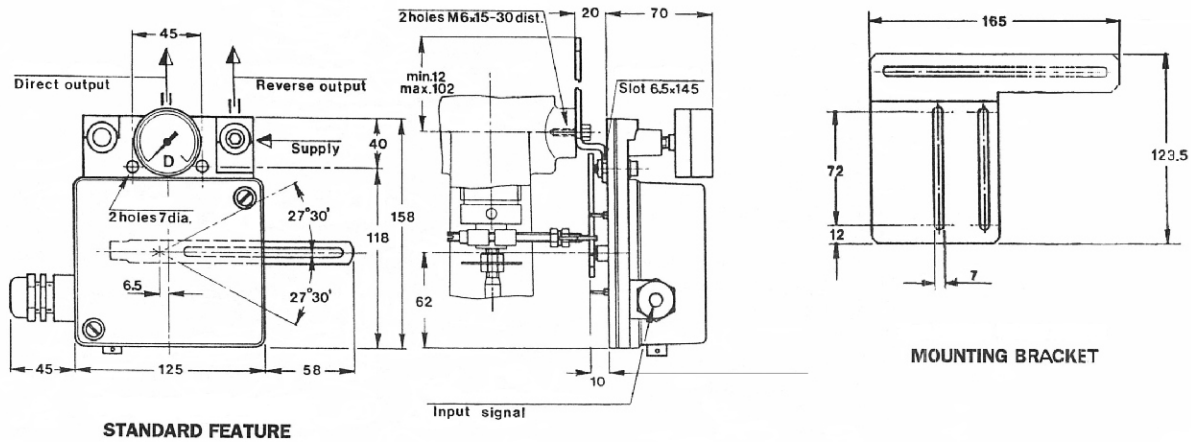
Being intrinsically safe for zone 0 groups IIA and IIB and IIC is a standard feature for the *ENP225* Series. Optionally, the instrument can be ordered with explosion proof barriers. However, this option is only available for the models which accept mA input signals.

**ALSO AVAILABLE AT INDUMART:
COMPLETE LINES OF CONTROL
VALVES & FILTER REGULATORS**

SPECIFICATIONS

Input	4 - 20 mA (standard), for other inputs see the
ordering	
Input Signal Span	8...20 mA
Adjustments	Zero and span
Input Resistance	270 Ω for 4-20; 555 Ω for 0-5 VDC
Air Supply Pressure	20 to 100 psi (1.4 to 7 bar)
Static Consumption	0.5 to 1.2 Nm ³ /h
Load/Exhaust Capacity	4 Nm ³ /h @ 20 psi (1.4 bar) 12 Nm ³ /h @ 100 psi (7 bar)
Open Loop Gain	100 min.
Stroke Limits	15 to 100 mm
Angular Stroke of Cam	Std. mounting: 55° Dir: 90°
Output	0 - 100% of supply pressure
Action	Direct or reverse
Ambient Temperature	-20...+80°C
Storage Temperature	-40...+90°C
Temperature Drift	0.4%/10°C (-10...+70°C)
Supply Pressure Effect	Zero shifts 0.5% of the input span for every 10 kPa change
Accuracy Rating	Non-linearity: < ±1% Hysteresis: < ±1%
Repeatability	Single acting: < 0.2% Double acting: < 0.3%
Threshold Sensitivity	Single acting: < 0.1% Double acting: < 0.2%
Case and Cover	Aluminum alloy with anti oxide protection and epoxy painting
Lever & Coupling Arm	Stainless steel
Bracket	Zinc plated carbon steel
Mounting	Standard: plane bracket Direct: 90° bent bracket
Supply and Output	1/4" NPTf
Environ. Protection	IP-65
Weight	Standard mounting: 1.5 kg Direct mounting: 2.3 kg Extra for EX version: 1.6 kg

DIMENSIONS (mm)



STANDARD FEATURE

MOUNTING BRACKET

ORDERING

Model ENP225

Single Acting
Double Acting

1

2

INPUT SIGNAL

4-20 mA
0-20 mA
4-12 mA
12-20 mA
1-5 V
0-5 V

0
1
2
3
4
5

CAM PROFILE

Linear (standard)
Fast
Slow
Virgin

0
1
2
3

OUTPUT SIGNAL PRESSURE GAUGE

0-35 psi / 0-2.5 bar
0-60 psi / 0-4 bar
0-150 psi / 0-10 bar

0
1
2

MOUNTING

Standard Bracket
Direct Mounting 90 without Bracket
Direct Mounting 90 with Bracket (VDE/NAMUR standard)

0
1
2

EXPLOSION PROTECTION

Intrinsically Safe (Ex ia IIC T5, T4)
Explosion Proof (not available with volt input)

0
1



INDUMART INC.

1 - 15 West Pearce St., Richmonh Hill, Ont. L4B 1H6, Canada
Phone: (905) 707-9998 Fax: (905) 707-8484 E-mail: Sales@Indumart.com