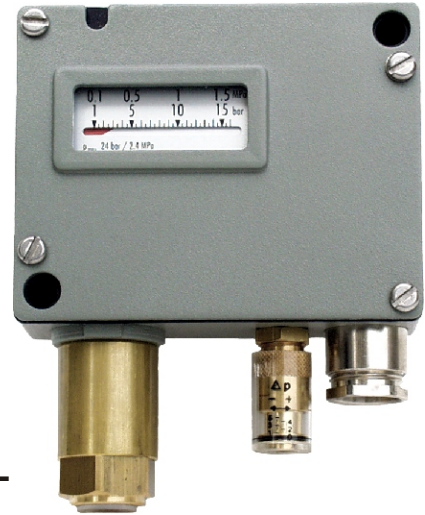


## SERIES: PSM210

- RUGGED HOUSING
- ST. STEEL OR BRONZE SENSOR
- REPEATABILITY BETTER THAN 1.0%
- EXCELLENT VIBRATION RESISTANCE
- RANGES COVERING -90 TO 10,000kPa
- DUST PROOF AND WATER PROOF (IP65)
- ADJUSTABLE OR FIXED SWITCHING DIFFERENTIAL
- INTERNAL OR EXTERNAL SETPOINT ADJUSTMENT
- BRACKET FOR SURFACE MOUNTING (OPTION)
- GOLD PLATED CONTACTS FOR INTRINSICALLY SAFE CIRCUITS (OPTION)



- APPLICATIONS:**
- Shipbuilding
  - Pumps
  - Gearing
  - Diesel Engines
  - Hydraulics
  - Railway

### INTRODUCTION

Indumart PSM210 Series Industrial Pressure Switches with metal bellows sensors meet stringent demands and can be used in critical industrial applications where particular importance is attached to measuring reproducibility, long term stability and protection against water and dust penetration.

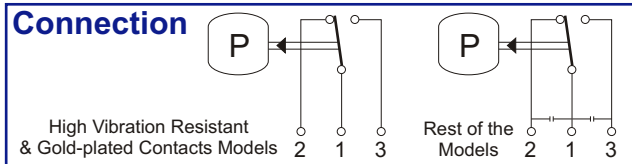
Housed in a die cast aluminum case, the Series PSM210 ON/OFF Pressure Controllers are supplied with either stainless steel or bronze sensors and wetted parts. The setpoint adjustment nub can be external for ease of frequent setpoint changes, or be placed inside the case to prevent setpoint tampering. Switching differential may be adjustable or fixed.

The PSM210 Series can stand very high vibration and are used in shipbuilding and diesel engine manufacturing applications. Various levels of vibration resistance are specified to suit every application.

The switch can be directly mounted to the process or be secured to a surface, with the aid of a bracket.

### SPECIFICATIONS

- Repeatability** ±1.0% of full scale
- Scale Accuracy** ±2% of full scale
- Hysteresis** <10% of full scale
- Adjustments** Internal or external of the case
- Case** Aluminum die cast, epoxy coated
- Sensor** Metal bellows; 316L st. steel, bronze
- Seal** Nitril
- Mounting** Direct, bracket for surface mounting
- Process Connection** ½" male, ¼" female
- Environ. Protection** IP-65
- Dielectric Strength** 1.25 kV to ground
- Shock** 50g / 11ms
- Medium Temperature** -40...+150°C
- Ambient Temperature** -20...+70°C
- Storage Temperature** -25...+80°C
- Insulation Resistance** >2MΩ
- Weight** Approximately 610g (1.36 lb)



### Switching Differentials for Various Ranges and Switching Types of the PSM210 Series - Pressure Unit is kPa.

Range	Over-pressure	Burst Pressure	Switching Type					
			A and G	B	C	D	E	F
-90...150	1000	1300	~ 10	~ 3	~ 10	~ 35	6...20	10...130
20...160	1000	1300	~ 10	~ 3	~ 10	~ 35	6...20	10...130
20...250	1000	1300	~ 10	~ 3	~ 10	~ 35	6...20	10...130
0...400	1200	2600	~ 20	~ 8	~ 30	~ 120	20...60	40...320
0...600	1200	2600	~ 20	~ 8	~ 30	~ 120	20...60	40...320
100...1000	2400	3600	~ 40	~ 20	~ 80	~ 240	50...160	100...750
100...1600	2400	3600	~ 40	~ 20	~ 80	~ 240	50...160	100...750
200...2500	4000	7500	~ 100	~ 50	~ 200	~ 600	100...400	300...1800
400...4000	4000	7500	~ 100	~ 50	~ 200	~ 600	100...400	300...1800
600...6000	10000	16000	~ 300	~ 150	~ 500	~ 1800		
1000...10000	10000	16000	~ 300	~ 150	~ 500	~ 1800		

# ORDER CODE

## INDUSTRIAL PRESSURE SWITCHES

**Model:** PSM210 -

### ADJUSTMENT NUB AND DISPLAY

- External Adjustment with Display
- Internal Adjustment with Display
- Internal Adjustment without Display

### RANGE

- 90...150 kPa (-13...21.5 psi)
- 20...160 kPa (2.9...23 psi)
- 20...250 kPa (2.9...36 psi)
- 0...400 kPa (0...58 psi)
- 0...600 kPa (0...87 psi)
- 100...1000 kPa (14.5...145 psi)
- 100...1600 kPa (14.5...232 psi)
- 200...2500 kPa (29...362 psi)
- 400...4000 kPa (58...580 psi)
- 600...6000 kPa (87...870 psi) - Not for types E and F
- 1000...10000 kPa (145...1450 psi) - Not for types E and F

### SWITCHING DIFFERENTIAL & ELECTRICAL RATING (See the Tables)

- Standard fixed switching differential (Type "A")
- Small fixed switching differential (Type "B")
- Medium fixed switching differential (Type "C")
- Large fixed switching differential (Type "D")
- Small adjustable switching differential (Type "E")
- Large adjustable switching differential (Type "F")
- Standard fixed sw. diff. / Gold-plated contacts (Type "G")

### VIBRATION RESISTANCE

- Standard (for switching types of A, B, D, F and G)
- Extended (for switching types of A and F)
- High (for switching types of C, E and F)

### MATERIAL

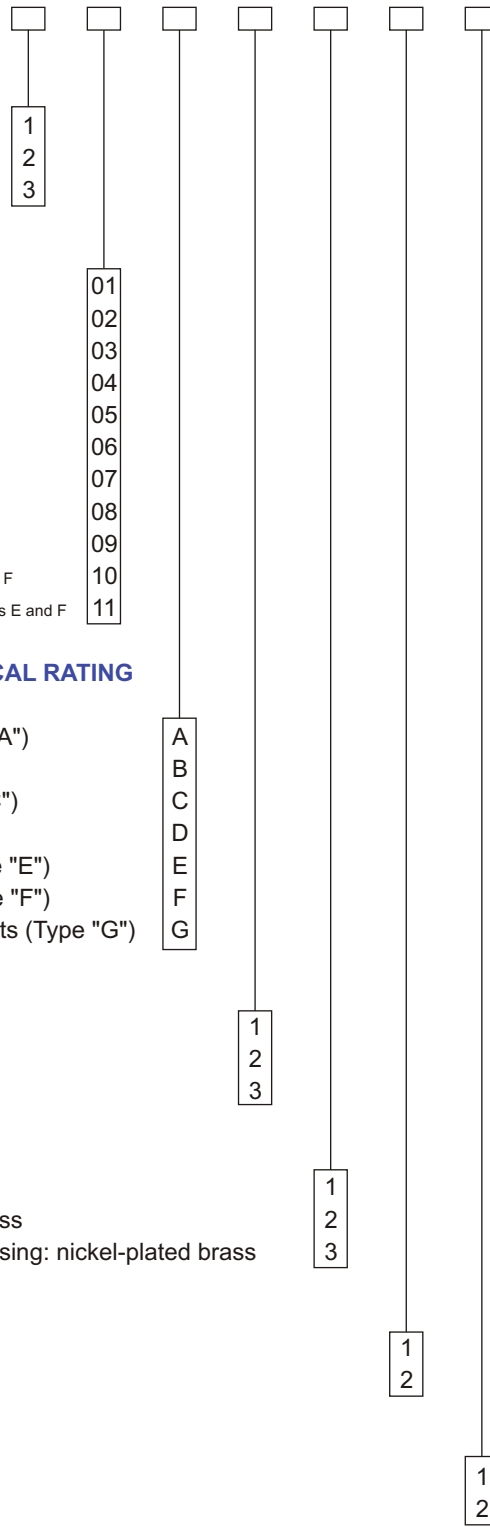
- Sensor: bronze - Housing: brass
- Sensor: bronze - Housing: nickel-plated brass
- Sensor & Wetted parts: 316L st. steel - Housing: nickel-plated brass

### CONNECTION

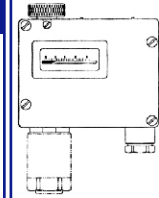
- ¼" female
- ½" male

### MOUNTING

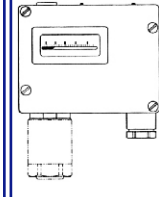
- Direct
- Mounting bracket



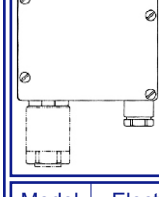
### ADJUSTMENT NUB & DISPLAY



PSM210-1



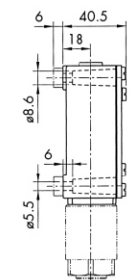
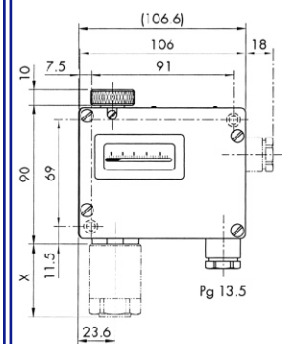
PSM210-2



PSM210-3

Model	Electrical Rating	
	AC	DC
A, C, E, F	380V-15A	220V-0.2A 110V-0.4A 24V-6A 12V-15A
B	250V-10A	220V-0.3A 110V-0.5A 24V-5A
D	380V-20A	220V-0.6A 110V-0.7A 24V-20A 12V-20A
G	24V-0.01A 12V-1.0A 5V-2.0A	24V-0.01A 12V-1.0A 5V-2.0A

### DIMENSIONS (mm)



**A COMPLETE LINE OF PRESSURE INSTRUMENTS @ INDUMART**



**INDUMART INC.**

1-15 W. Pearce St., Richmond Hill, Ont. L4B 1H6, Canada  
Phone: (905) 707-9998 Fax: (905) 707-8484 E-mail: Sales@Indumart.com